

REFLECTOR SLIM

Características

Material	Al+PMMA
Terminado	Negro
Pantalla	PMMA
Indice de protección	IP65
Base (poste)	Soporte de Fijación
Dimensiones mm	250*110*42 mm
Lúmenes	6,500 Lm
Temperatura	6,500K
Ángulo	60°

Parámetros Eléctricos

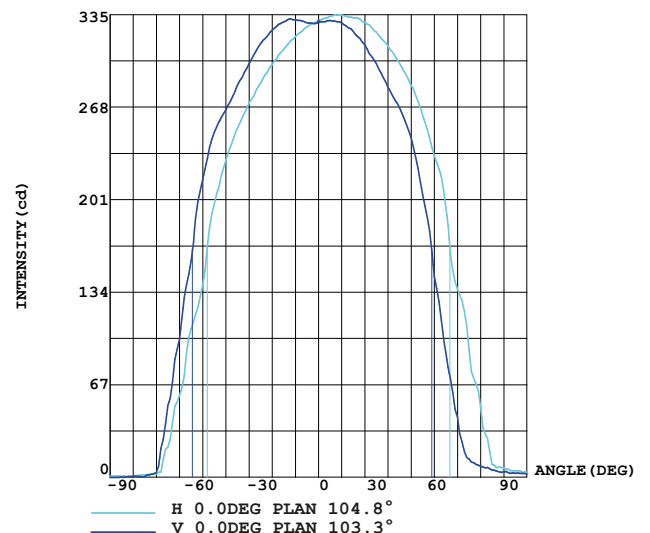
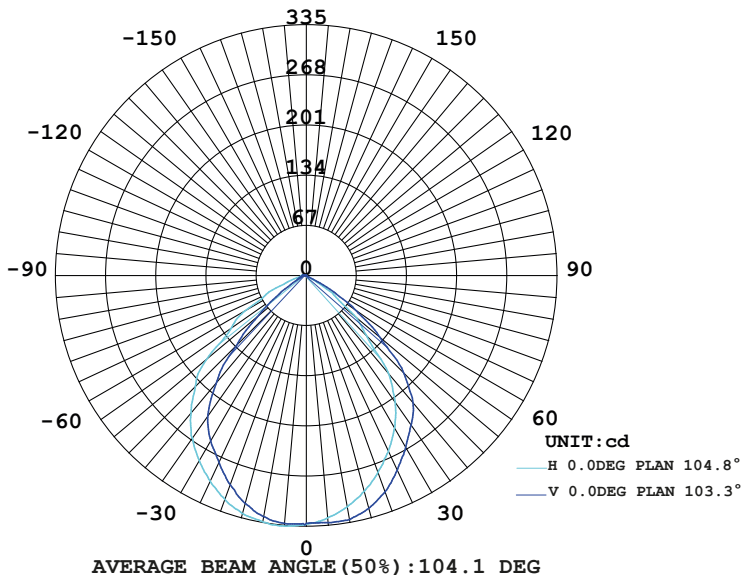
Tensión Nominal [V~]	85-265V~
Consumo de Potencia [W]	50W
Frecuencia Nominal [Hz]	50/60Hz
Consumo de Corriente [A]	0.59A
Temperatura de Operación	-5 a 45 °C

Beneficios

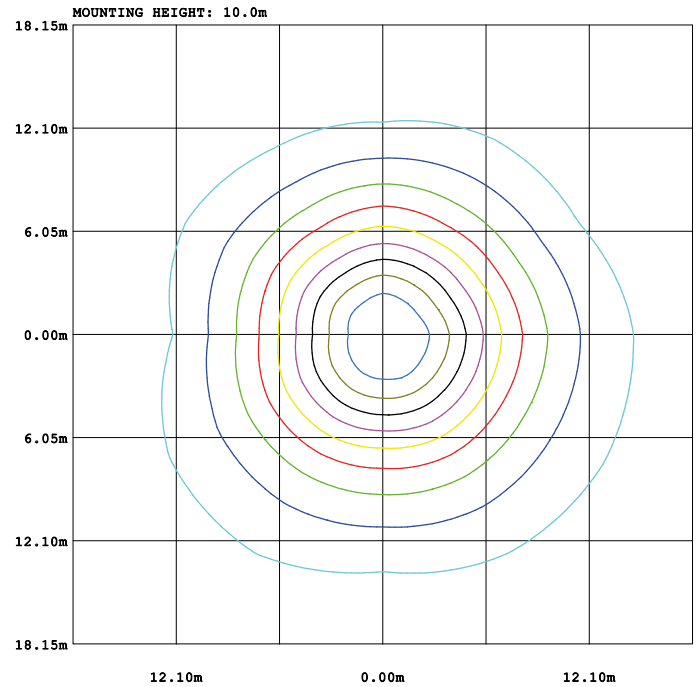
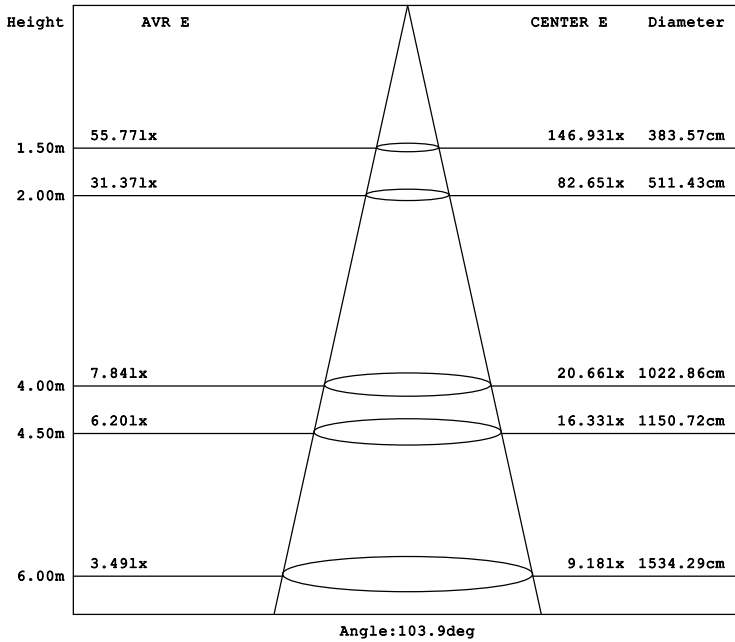
Garantía	2 Años de Garantía
Certificación	NOM ANCE



LUMINOUS INTENSITY DISTRIBUTION DIAGRAM

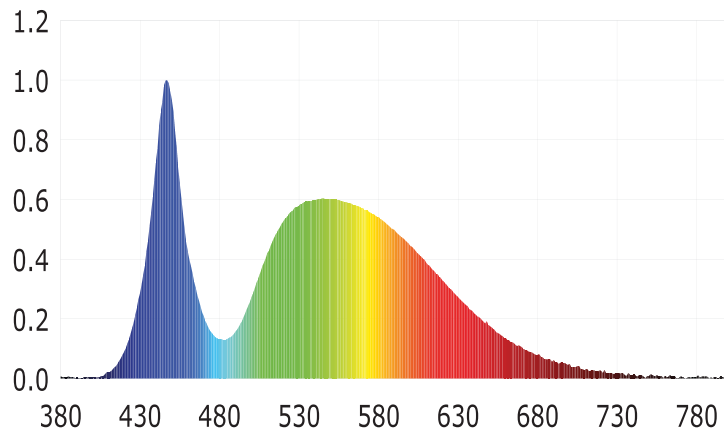
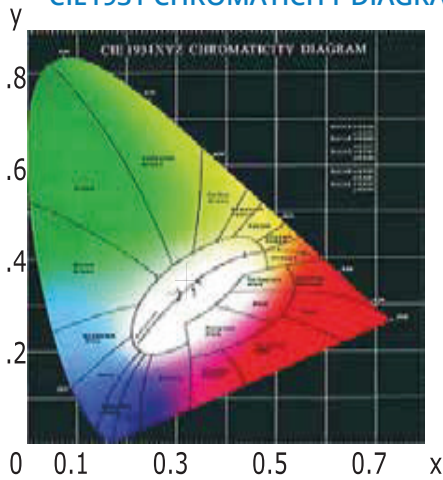


Características y Valores Aproximados



- 10% 0.3311x
- 20% 0.6621x
- 30% 0.9931x
- 40% 1.3241x
- 50% 1.6551x
- 60% 1.9861x
- 70% 2.3171x
- 80% 2.6481x
- 90% 2.9791x

CIE1931 CHROMATICITY DIAGRAM



Parámetros colorimétricos

CCT: Tc=6012K (duv=0.01224)

CRI: Ra= 70.0, avgR(1~14)= 58.4, avgR(1~15)= 58.4

Parámetros fotométricos

Luminous Flux: 883.41 Lm

EEL: 0.16

Pupil Flux: 1497.35 Plm

Efficiency: 79.95Lm/W

Energy Efficiency Class: A+ (EU 874-2012)

Pupil Lumens Per Watt: 135.51 Plm/W

Radiant Power: 2.618W

Pupil Factor (Kp): 1.695

Parámetros eléctricos

Voltage: 127.20V

Power Factor: 0.5940

Current: 0.1460A

Frequency: 60.00Hz

Power: 11.05W