

# Product data sheet

Specifications

SQUARE D



Load center, QO, 1 phase, 30 spaces, 30 circuits, 200A convertible main lugs, NEMA3R, gnd bar, UL

QO130L200GRB

ⓘ Discontinued on: 15 October 2021

ⓘ Discontinued

## Main

Marketing Trade Name	QO
Product Type	Load Center
Enclosure Type	Weatherproof enclosure
Cover Type	Surface cover

## Complementary

Tightening Torque	Main lugs 250 lb.in, AWG 4...250 kcmil, aluminium/copper
Load Center Type	Convertible Mains (lugs)
Rated Current	200 A
Number of Spaces	30
Max Short Circuit Current Rating	65 kA
Maximum Number of Single Pole Circuits	30
Maximum Number of Tandem Breakers	0
Number of Phases	1 phase
Voltage Rating	120/240 V AC
Wire Size	AWG 6...250 kcmil aluminium/copper
Ground Bar	Grounding bar included (not installed)
Electrical Connection	Lugs
Wiring Configuration	3-wire
Busbar Material	Tin plated copper busbar
Enclosure Material	Welded galvanized steel
Surface Finish	Baked enamel Gray
Box Number	6R
Height	29.84 in (758 mm)
Width	14.76 in (375 mm)

## Environment

Enclosure Rating	NEMA 3R outdoor
Ambient Air Temperature for Operation	23 °F (-5 °C) 104 °F (40 °C)
Product Certifications	UL Listed

## Ordering and shipping details

Category	00002-QO 1PH LC,12-42 CKT,NEMA3R
Discount Schedule	DE3A
GTIN	785901868095
Returnability	No
Country of origin	US

## Packing Units

Unit Type of Package 1	PCE
Number of Units in Package 1	1
Package 1 Height	31.60 in (80.264 cm)
Package 1 Width	5.10 in (12.954 cm)
Package 1 Length	15.50 in (39.37 cm)
Package 1 Weight	32.43 lb(US) (14.71 kg)

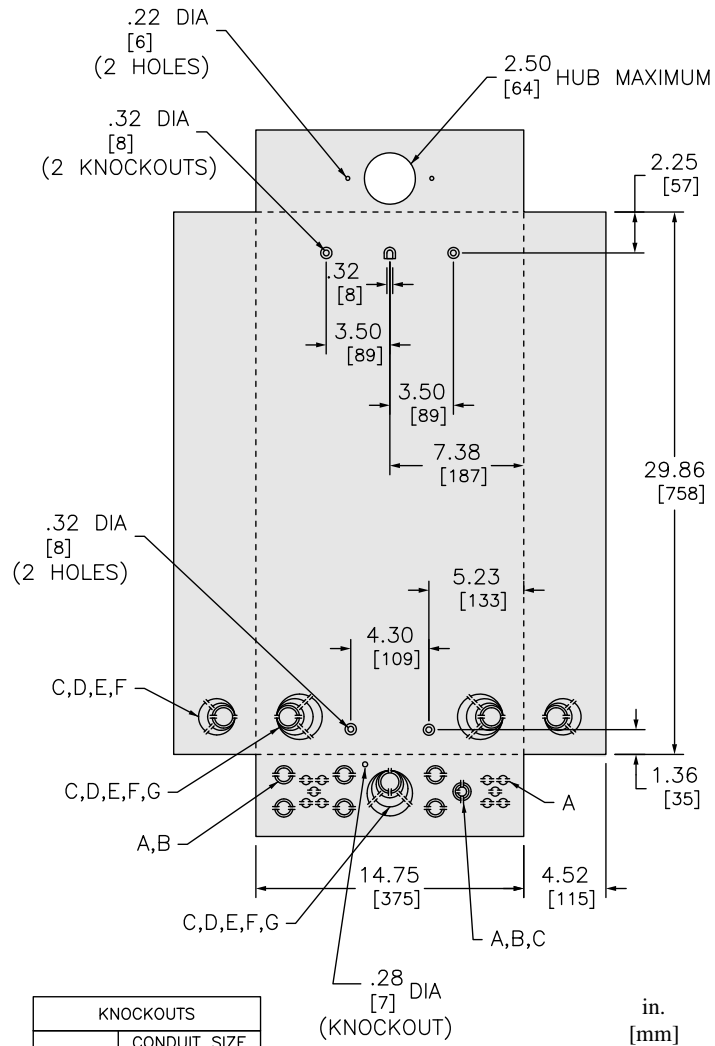
## Offer Sustainability

California proposition 65	WARNING: This product can expose you to chemicals including: Lead and lead compounds, which is known to the State of California to cause cancer and birth defects or other reproductive harm. For more information go to <a href="http://www.P65Warnings.ca.gov">www.P65Warnings.ca.gov</a>
REACH free of SVHC	Yes
EU RoHS Directive	Compliant <a href="#">EU RoHS Declaration</a>
Toxic heavy metal free	Yes
Mercury free	Yes
RoHS exemption information	<a href="#">Yes</a>
China RoHS Regulation	<a href="#">China RoHS declaration</a> Pro-active China RoHS declaration (out of China RoHS legal scope)

## Contractual warranty

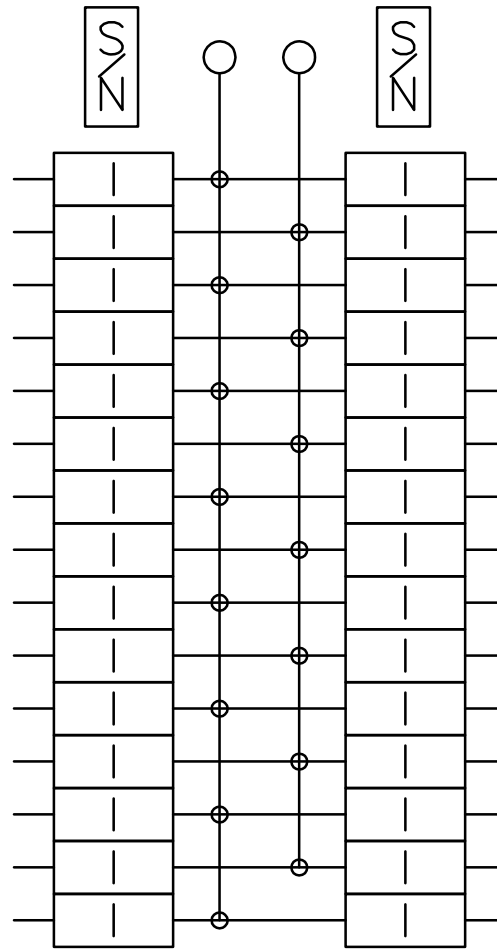
Warranty	18 months
----------	-----------

Dimensions



All dimensions are approximate.  
 Also refer to technical drawings and documentation.

Wiring Diagram



QO130L150GRB  
QO130L200GRB

Recommended replacement(s)

QO130L200GRB is replaced by:

1x



Load center, QO, 1 phase, 30 spaces, 30 circuits, 200A convertible main lugs, PoN, NEMA3R, gnd bar, UL  
QO130L200PGRB